



DRAFT

DEMOGRAPHIC AND ENROLLMENT TRENDS
JEFFERSON COUNTY, TENNESSEE

Prepared by the Knoxville/Knox County Metropolitan Planning Commission

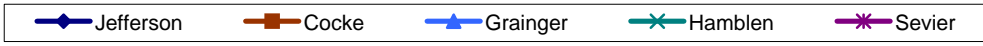
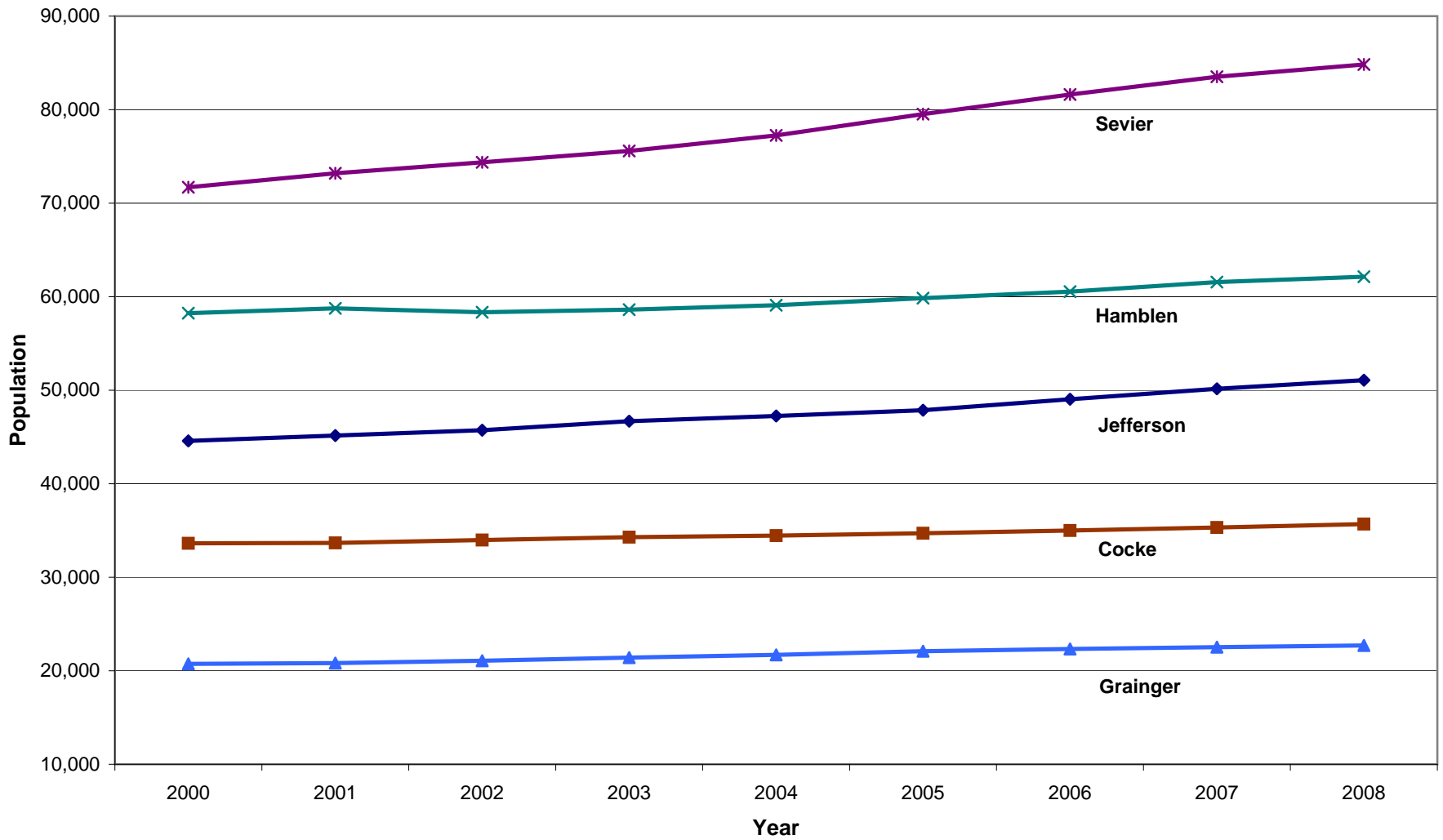
September 8, 2009

POPULATION ESTIMATES, 2000 TO 2008
JEFFERSON COUNTY AND SURROUNDING AREA

Area	2000	2001	2002	2003	2004	2005	2006	2007	2008	Total Change 2000-08	Total Change (%) 2000-08	Average Annual Change	Average Annual Change (%)
Jefferson County	44,582	45,160	45,724	46,686	47,254	47,861	49,041	50,154	51,074	6,492	14.6	812	1.8
Anderson County	71,232	71,317	71,340	71,365	71,319	71,725	72,735	73,246	74,169	2,937	4.1	367	0.5
Blount County	106,217	107,926	109,499	111,073	113,033	115,152	117,748	119,602	121,511	15,294	14.4	1,912	1.8
Cocke County	33,627	33,667	33,981	34,288	34,459	34,712	35,003	35,317	35,688	2,061	6.1	258	0.8
Grainger County	20,737	20,831	21,079	21,412	21,699	22,090	22,336	22,528	22,708	1,971	9.5	246	1.2
Greene County	63,037	63,262	63,402	63,628	64,103	64,795	65,363	65,846	66,157	3,120	4.9	390	0.6
Hamblen County	58,243	58,760	58,337	58,622	59,091	59,847	60,538	61,565	62,132	3,889	6.7	486	0.8
Knox County	383,028	387,712	392,723	398,571	402,830	408,809	416,014	423,603	430,019	46,991	12.3	5,874	1.5
Sevier County	71,699	73,200	74,365	75,585	77,244	79,519	81,627	83,513	84,835	13,136	18.3	1,642	2.3
Union County	17,859	18,284	18,405	18,583	18,575	18,645	18,752	18,838	19,008	1,149	6.4	144	0.8
Tennessee	5,703,094	5,753,497	5,799,093	5,849,563	5,906,936	5,983,211	6,068,306	6,149,116	6,214,888	511,794	9.0	63,974	1.1

Source Data: U.S. Census Bureau, Population Division, *Annual Estimates of the Resident Population for Counties of Tennessee: April 1, 2000 to July 1, 2008*. Release Date: March 19, 2009.

POPULATION IN JEFFERSON AND SURROUNDING COUNTIES, 2000-2008



SUB-COUNTY POPULATION ESTIMATES, 2000 TO 2008
JEFFERSON COUNTY

Area	2000	2001	2002	2003	2004	2005	2006	2007	2008	Total Change 2000-08	Total Change (%) 2000-08	Average Annual Change	Average Annual Change (%)
Jefferson County	44,582	45,160	45,724	46,686	47,254	47,861	49,041	50,154	51,074	6,492	14.6	812	1.8
Baneberry	373	394	396	415	426	436	443	458	475	102	27.3	13	3.4
Dandridge	2,117	2,181	2,189	2,214	2,255	2,330	2,437	2,560	2,687	570	26.9	71	3.4
Jefferson City	7,878	7,826	7,824	7,896	7,932	7,911	8,018	8,087	8,156	278	3.5	35	0.4
New Market	1,290	1,293	1,298	1,308	1,307	1,303	1,312	1,328	1,326	36	2.8	5	0.3
White Pine	2,005	2,008	2,012	2,034	2,030	2,032	2,073	2,087	2,143	138	6.9	17	0.9
Unincorporated Area	30,919	31,458	32,005	32,819	33,304	33,849	34,758	35,634	36,287	5,368	17.4	671	2.2

Notes:

1. "Unincorporated Area" is calculated as the remainder of the Jefferson County population not found in the listed incorporated places.
 2. A portion of Morristown extends into Jefferson County. Total population in the Jefferson County portion of Morristown in 2000 was 6 persons. The Census Bureau does not report separately the Morristown portions of Jefferson County for 2001 through 2008. Accordingly, those values, while very small, are included with the "Unincorporated Area" totals.
 3. A portion of White Pine extends into Hamblen County. Total population in the Hamblen County portion of White Pine in 2000 was 0 persons. Since the Census Bureau does not report separately the Hamblen County portion of White Pine for 2001 through 2008, it is assumed the Hamblen County portion remains at or near 0.
- Source Data: U.S. Census Bureau, Population Division, *Annual Estimates of the Resident Population for Incorporated Places in Tennessee: April 1, 2000 to July 1, 2008*. Release Date: July 1, 2009.

NATURAL INCREASE, 2000 TO 2008
JEFFERSON COUNTY AND SURROUNDING AREA

Area	2000-01	2001-02	2002-03	2003-04	2004-05	2005-06	2006-07	2007-08	Annual Average 2000-08
Jefferson County	90	90	37	75	39	126	72	91	78
Anderson County	-5	-25	-8	-75	84	20	1	84	10
Blount County	246	108	81	126	188	173	210	207	167
Cocke County	-22	18	-1	-24	-19	-17	7	-15	-9
Grainger County	56	33	62	32	24	40	16	26	36
Greene County	47	-71	-67	24	26	-49	-77	-24	-24
Hamblen County	278	167	192	139	232	273	241	223	218
Knox County	1,118	1,157	1,285	1,305	1,388	1,702	1,704	1,705	1,421
Sevier County	299	211	301	181	309	362	313	288	283
Union County	61	82	88	76	83	83	46	61	73
Tennessee	23,747	21,965	21,352	22,385	23,509	26,433	26,342	26,472	24,026

Note: Natural increase is the difference between births and deaths. Figures in this table are annual estimates, from July 1 of one year to July 1 of the following year, compiled by the U.S. Census Bureau. These figures will vary slightly from counts of births and deaths reported by the Tennessee Department of Health.

The Department of Health reports birth and death certificate data rather than estimates, and it reports figures from January 1 to December 31 each year, rather than mid-year summaries.

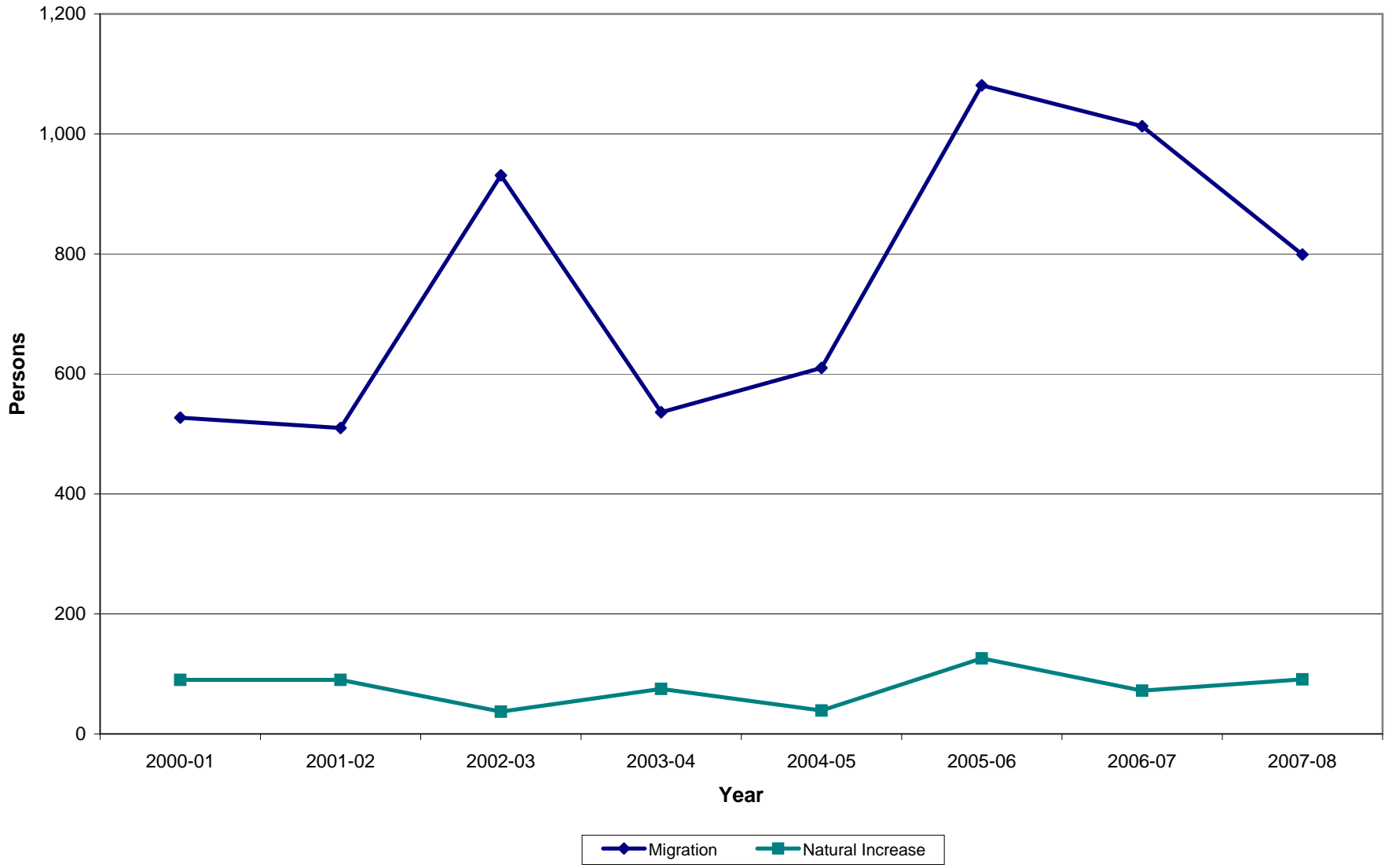
Source Data: U.S. Census Bureau, Population Division, *Annual Resident Population Estimates, Estimated Components of Resident Population Change, and Rates of the Components of Resident Population Change for States and Counties: April 1, 2000 to July 1, 2008*. Release Date: March 19, 2009.

NET MIGRATION, 2000 TO 2008
JEFFERSON COUNTY AND SURROUNDING AREA

Area	2000-01	2001-02	2002-03	2003-04	2004-05	2005-06	2006-07	2007-08	Annual Average 2000-08
Jefferson County	527	510	931	536	610	1,081	1,013	799	751
Anderson County	159	115	134	76	391	1,026	498	790	399
Blount County	1,535	1,532	1,558	1,963	2,019	2,489	1,654	1,707	1,807
Cocke County	95	319	336	222	300	326	317	380	287
Grainger County	57	228	288	277	388	217	169	155	222
Greene County	235	265	356	510	730	647	535	326	451
Hamblen County	296	-555	183	375	578	449	771	309	301
Knox County	1,980	2,573	3,238	2,903	4,591	5,499	5,831	4,606	3,903
Sevier County	1,251	999	962	1,576	2,032	1,790	1,547	983	1,393
Union County	373	56	106	-72	0	33	52	129	85
Tennessee	20,950	19,507	25,826	32,219	50,002	58,832	53,757	38,131	37,403

Source Data: U.S. Census Bureau, Population Division, *Annual Resident Population Estimates, Estimated Components of Resident Population Change, and Rates of the Components of Resident Population Change for States and Counties: April 1, 2000 to July 1, 2008*. Release Date: March 19, 2009.

JEFFERSON COUNTY COMPONENTS OF POPULATION CHANGE, 2000/01-2007/08



JEFFERSON COUNTY VITAL STATISTICS, 1990-2007

Year	Births	Fertility Rate	Deaths	Crude Death Rate	Natural Increase
1990	403	52.7	321	9.7	82
1991	389	50.1	300	8.9	89
1992	419	54.5	324	9.5	95
1993	410	51.1	372	10.5	38
1994	399	49.2	343	9.5	56
1995	447	52.7	360	9.5	87
1996	456	52.1	373	9.5	83
1997	476	52.2	397	9.6	79
1998	485	52.1	428	10.1	57
1999	555	58.5	403	9.2	152
2000	536	56.2	419	9.5	117
2001	516	53.1	456	10.1	60
2002	539	55.7	447	9.8	92
2003	510	52.2	442	9.5	68
2004	523	53.1	475	10.1	48
2005	575	57.9	504	10.5	71
2006	587	58.7	471	9.7	116
2007	613	57.5	510	10.2	103
Avg. 1998-2007	544	55.5	456	9.9	88
Avg. 2003-2007	562	55.9	480	10.0	81

Notes:

1. Births are recorded by county of residence of mother (at the time of birth of the child), not by place of birth of child.
2. Fertility rate = Number of births per 1,000 females aged 15-44 years.
3. Crude death rate = Number of deaths per 1,000 population.

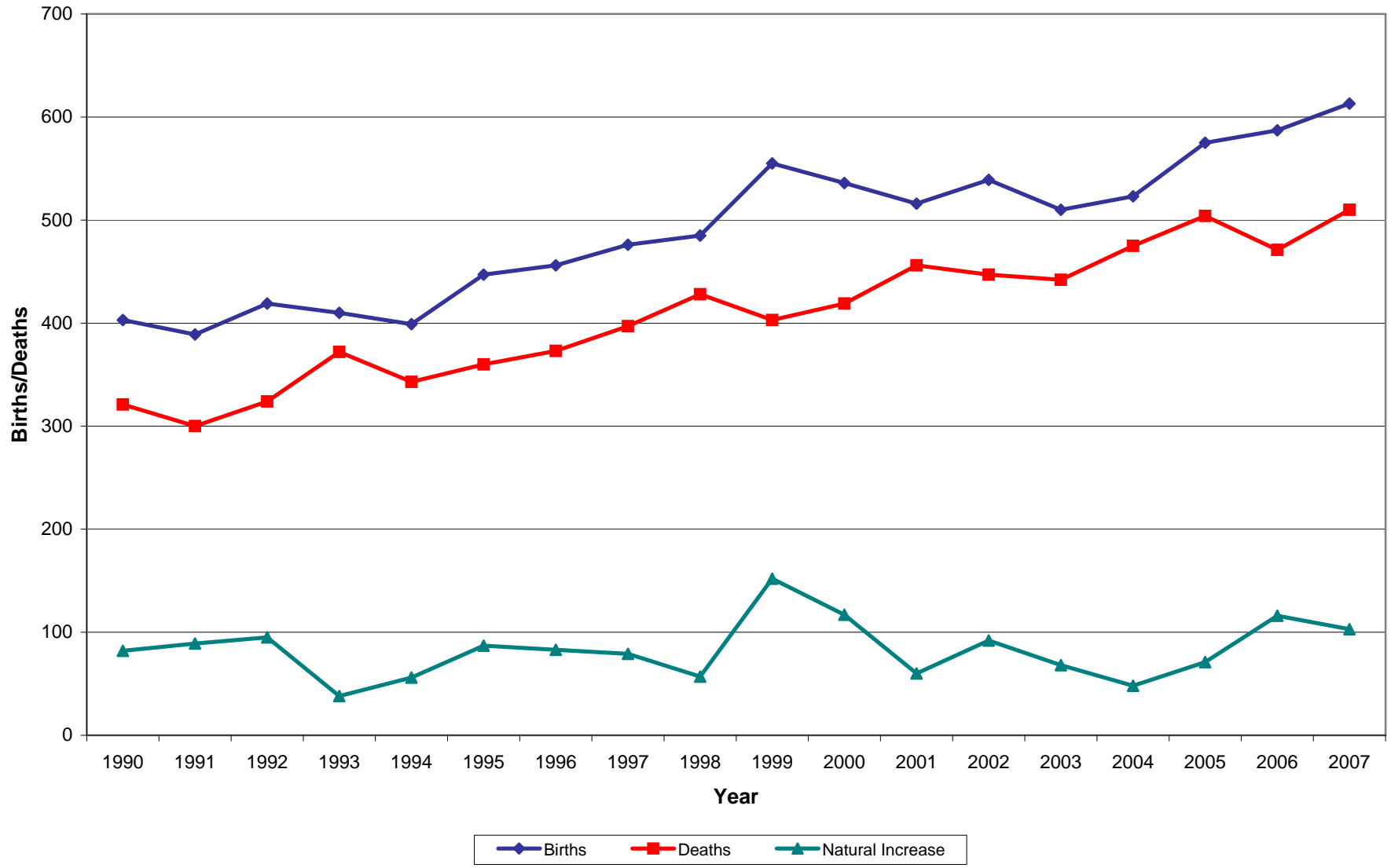
Source Data:

Tennessee Department of Health, Health Information Tennessee, *Mortality Rate, 1990 to 2006*.

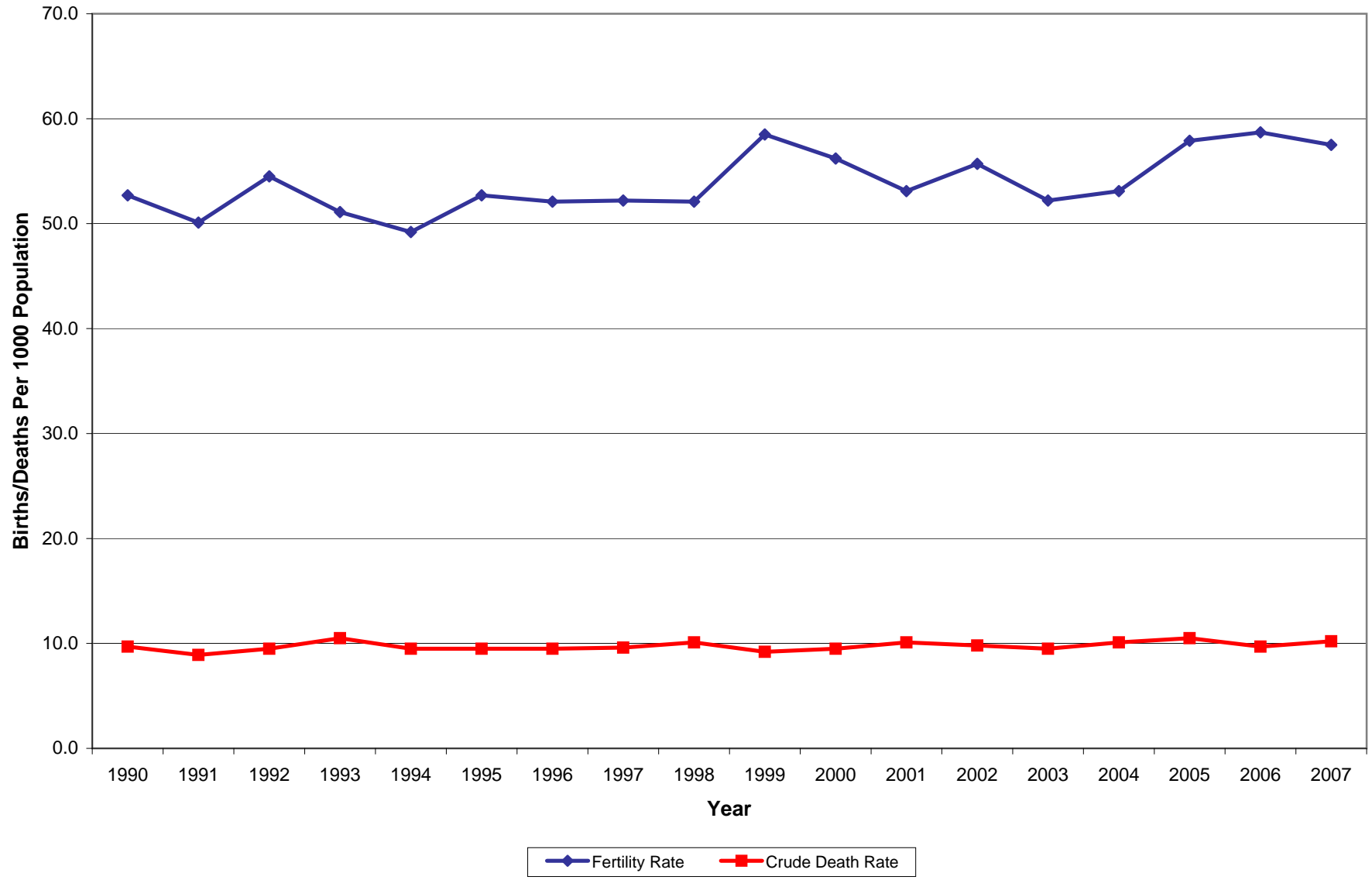
Tennessee Department of Health, Health Information Tennessee, *Births, 1990 to 2006*.

Tennessee Department of Health, Office of Policy, Planning, and Assessment,
Division of Health Statistics, Vital Statistics Annual Release, 2000-2007.

JEFFERSON COUNTY BIRTHS AND DEATHS, 1990-2007



JEFFERSON COUNTY FERTILITY AND MORTALITY RATES, 1990-2007



AGE GROUP POPULATION, 2000-2008
JEFFERSON COUNTY AND SURROUNDING AREA

Area	Year	Total	Under 5 Years	5-13 Years	14-17 Years	18-24 Years	25-44 Years	45-64 Years	65 Years and Over	Median Age
Jefferson County	2000	44,582	2,733	5,166	2,288	4,743	12,920	10,993	5,739	36.6
	2008	51,074	2,985	5,576	2,727	4,856	14,479	12,869	7,582	38.0
	Total change (%), 2000-08	14.6	9.2	7.9	19.2	2.4	12.1	17.1	32.1	
	Average annual change (%)	1.8	1.2	1.0	2.4	0.3	1.5	2.1	4.0	
Anderson County	2000	71,232	3,957	8,645	3,870	5,341	19,360	18,234	11,825	40.0
	2008	74,169	4,423	7,693	4,070	5,528	18,792	21,139	12,524	41.8
	Total change (%), 2000-08	4.1	11.8	-11.0	5.2	3.5	-2.9	15.9	5.9	
	Average annual change (%)	0.5	1.5	-1.4	0.6	0.4	-0.4	2.0	0.7	
Blount County	2000	106,217	6,111	12,483	5,572	8,887	31,075	27,102	14,987	38.5
	2008	121,511	7,088	13,168	6,351	9,647	33,843	33,006	18,408	39.7
	Total change (%), 2000-08	14.4	16.0	5.5	14.0	8.6	8.9	21.8	22.8	
	Average annual change (%)	1.8	2.0	0.7	1.7	1.1	1.1	2.7	2.9	
Cocke County	2000	33,627	1,989	3,884	1,781	2,815	9,623	8,932	4,603	38.7
	2008	35,688	2,144	3,833	1,831	2,367	10,030	9,867	5,616	40.1
	Total change (%), 2000-08	6.1	7.8	-1.3	2.8	-15.9	4.2	10.5	22.0	
	Average annual change (%)	0.8	1.0	-0.2	0.4	-2.0	0.5	1.3	2.8	
Grainger County	2000	20,737	1,260	2,420	1,055	1,716	6,298	5,385	2,603	37.8
	2008	22,708	1,335	2,548	1,137	1,561	6,604	6,128	3,395	39.3
	Total change (%), 2000-08	9.5	6.0	5.3	7.8	-9.0	4.9	13.8	30.4	
	Average annual change (%)	1.2	0.7	0.7	1.0	-1.1	0.6	1.7	3.8	
Greene County	2000	63,037	3,627	7,126	3,226	5,154	18,008	16,533	9,363	39.0
	2008	66,157	3,737	6,966	3,352	4,978	18,173	17,711	11,240	40.6
	Total change (%), 2000-08	4.9	3.0	-2.2	3.9	-3.4	0.9	7.1	20.0	
	Average annual change (%)	0.6	0.4	-0.3	0.5	-0.4	0.1	0.9	2.5	
Hamblen County	2000	58,243	3,815	6,688	3,017	5,223	17,169	14,576	7,755	37.2
	2008	62,132	4,329	7,115	3,064	4,494	17,713	15,800	9,617	38.4
	Total change (%), 2000-08	6.7	13.5	6.4	1.6	-14.0	3.2	8.4	24.0	
	Average annual change (%)	0.8	1.7	0.8	0.2	-1.7	0.4	1.0	3.0	
Knox County	2000	383,028	23,374	43,213	18,572	44,733	115,791	88,802	48,543	36.1
	2008	430,019	27,022	47,160	21,343	46,843	116,680	115,383	55,588	37.7
	Total change (%), 2000-08	12.3	15.6	9.1	14.9	4.7	0.8	29.9	14.5	
	Average annual change (%)	1.5	2.0	1.1	1.9	0.6	0.1	3.7	1.8	
Sevier County	2000	71,699	4,274	8,374	3,802	5,952	21,258	18,937	9,102	38.2
	2008	84,835	5,344	9,303	4,320	5,917	24,023	23,042	12,886	39.5
	Total change (%), 2000-08	18.3	25.0	11.1	13.6	-0.6	13.0	21.7	41.6	
	Average annual change (%)	2.3	3.1	1.4	1.7	-0.1	1.6	2.7	5.2	
Union County	2000	17,859	1,192	2,327	1,050	1,594	5,520	4,225	1,951	35.8
	2008	19,008	1,212	2,211	1,010	1,403	5,634	5,100	2,438	38.4
	Total change (%), 2000-08	6.4	1.7	-5.0	-3.8	-12.0	2.1	20.7	25.0	
	Average annual change (%)	0.8	0.2	-0.6	-0.5	-1.5	0.3	2.6	3.1	
Tennessee	2000	5,703,094	374,804	712,573	311,897	551,961	1,716,161	1,330,241	705,457	36.0
	2008	6,214,888	416,334	725,948	336,312	550,612	1,719,433	1,646,623	819,626	37.7
	Total change (%), 2000-08	9.0	11.1	1.9	7.8	-0.2	0.2	23.8	16.2	
	Average annual change (%)	1.1	1.4	0.2	1.0	0.0	0.0	3.0	2.0	

JEFFERSON COUNTY HISTORICAL AND PROJECTED POPULATION, BY AGE GROUP, 1980-2030
WOODS AND POOLE MODEL

Age Group	1980	1985	1990	1995	2000	2005	2010	2015	2020	2025	2030	Avg. Annual Change (%) 2005-30
Total, all ages	31,435	32,494	33,095	37,944	44,593	48,261	53,120	57,746	62,456	67,295	72,369	2.0
Under 5 years	1,903	1,901	1,802	2,235	2,728	2,552	2,806	3,197	3,520	3,728	3,913	2.1
5-9 years	2,294	2,029	1,884	2,265	2,869	2,800	2,864	3,138	3,571	3,925	4,151	1.9
10-14 years	2,518	2,231	2,054	2,272	2,833	2,951	2,990	3,052	3,333	3,797	4,180	1.7
15-19 years	3,285	3,031	2,955	3,020	3,197	3,350	3,704	3,743	3,824	4,164	4,743	1.7
20-24 years	2,967	3,053	2,814	3,079	3,308	3,617	3,801	4,099	4,157	4,301	4,715	1.2
25-29 years	2,198	2,458	2,406	2,665	2,996	3,466	3,774	3,870	4,195	4,260	4,368	1.0
30-34 years	2,329	2,415	2,417	2,931	3,188	3,450	3,865	4,155	4,233	4,574	4,643	1.4
35-39 years	2,105	2,293	2,270	2,626	3,480	3,429	3,625	4,034	4,344	4,403	4,760	1.6
40-44 years	1,894	2,088	2,412	2,511	3,274	3,705	3,658	3,856	4,304	4,624	4,667	1.0
45-49 years	1,767	1,878	2,228	2,713	2,882	3,447	4,060	3,976	4,177	4,623	4,975	1.8
50-54 years	1,528	1,682	2,002	2,521	3,066	2,962	3,599	4,222	4,139	4,357	4,833	2.5
55-59 years	1,575	1,742	1,815	2,263	2,717	3,053	3,050	3,620	4,254	4,179	4,397	1.8
60-64 years	1,463	1,628	1,595	1,863	2,318	2,614	3,159	3,127	3,701	4,340	4,242	2.5
65-69 years	1,281	1,376	1,469	1,530	1,879	2,252	2,587	3,123	3,094	3,670	4,301	3.6
70-74 years	978	1,100	1,161	1,308	1,447	1,869	2,210	2,528	3,057	3,029	3,599	3.7
75-79 years	668	784	879	1,006	1,047	1,209	1,574	1,845	2,116	2,571	2,537	4.4
80-84 years	404	460	528	627	747	869	994	1,271	1,492	1,708	2,079	5.6
85 years and over	278	345	404	509	617	666	800	890	945	1,042	1,266	3.6
School age (5-17 years)	6,577	5,884	5,406	6,100	7,451	7,619	7,803	8,110	8,948	9,998	10,907	1.7
Share (%) of total	20.9	18.1	16.3	16.1	16.7	15.8	14.7	14.0	14.3	14.9	15.1	
Working age (20-64 years)	17,826	19,237	19,959	23,172	27,229	29,743	32,591	34,959	37,504	39,661	41,600	1.6
Share (%) of total	56.7	59.2	60.3	61.1	61.1	61.6	61.4	60.5	60.0	58.9	57.5	
Seniors (65 years and over)	3,609	4,065	4,441	4,980	5,737	6,865	8,165	9,657	10,704	12,020	13,782	4.0
Share (%) of total	11.5	12.5	13.4	13.1	12.9	14.2	15.4	16.7	17.1	17.9	19.0	
Median age	31.3	33.2	35.4	35.9	36.6	37.8	38.8	39.4	40.1	40.5	40.7	

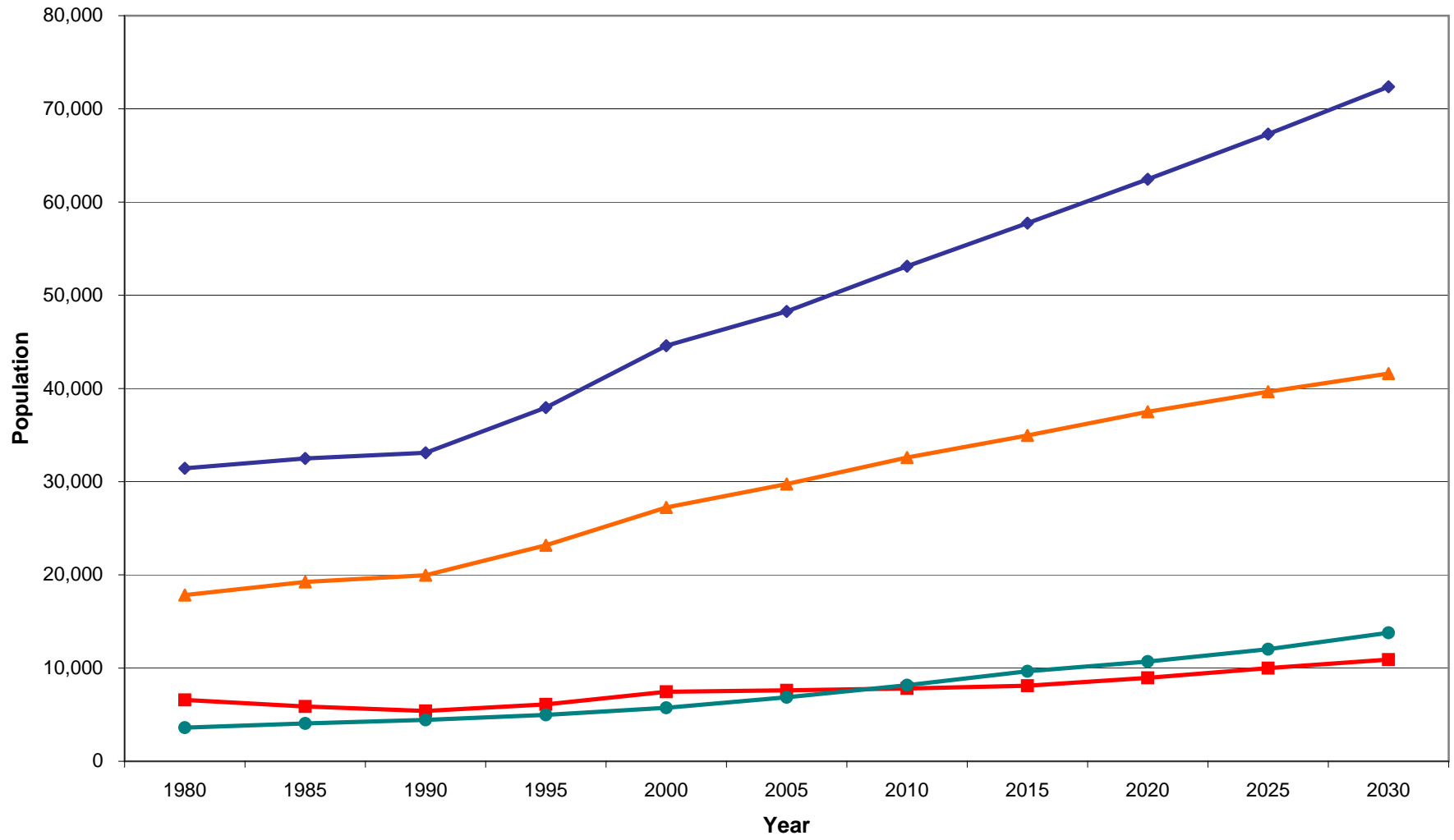
Note:

The data provider, Woods and Poole Economics, uses population counts from the Census Bureau's Population Estimates Program, tabulated on July 1 each year.

The Census Bureau's decennial Census of Population and Housing uses counts on April 1 for each reporting period. As a result, a slight difference will be seen in the total population counts from once source to another.

Source Data: Woods and Poole Economics, 2007.

JEFFERSON COUNTY POPULATION GROWTH, 1980-2030 (WOODS AND POOLE MODEL)



◆ Total, all ages ■ School age (5-17 years)
▲ Working age (20-64 years) ● Seniors (65 years and over)

JEFFERSON COUNTY HISTORICAL AND PROJECTED POPULATION, BY AGE GROUP, 2000-2025
TACIR/CBER MODEL

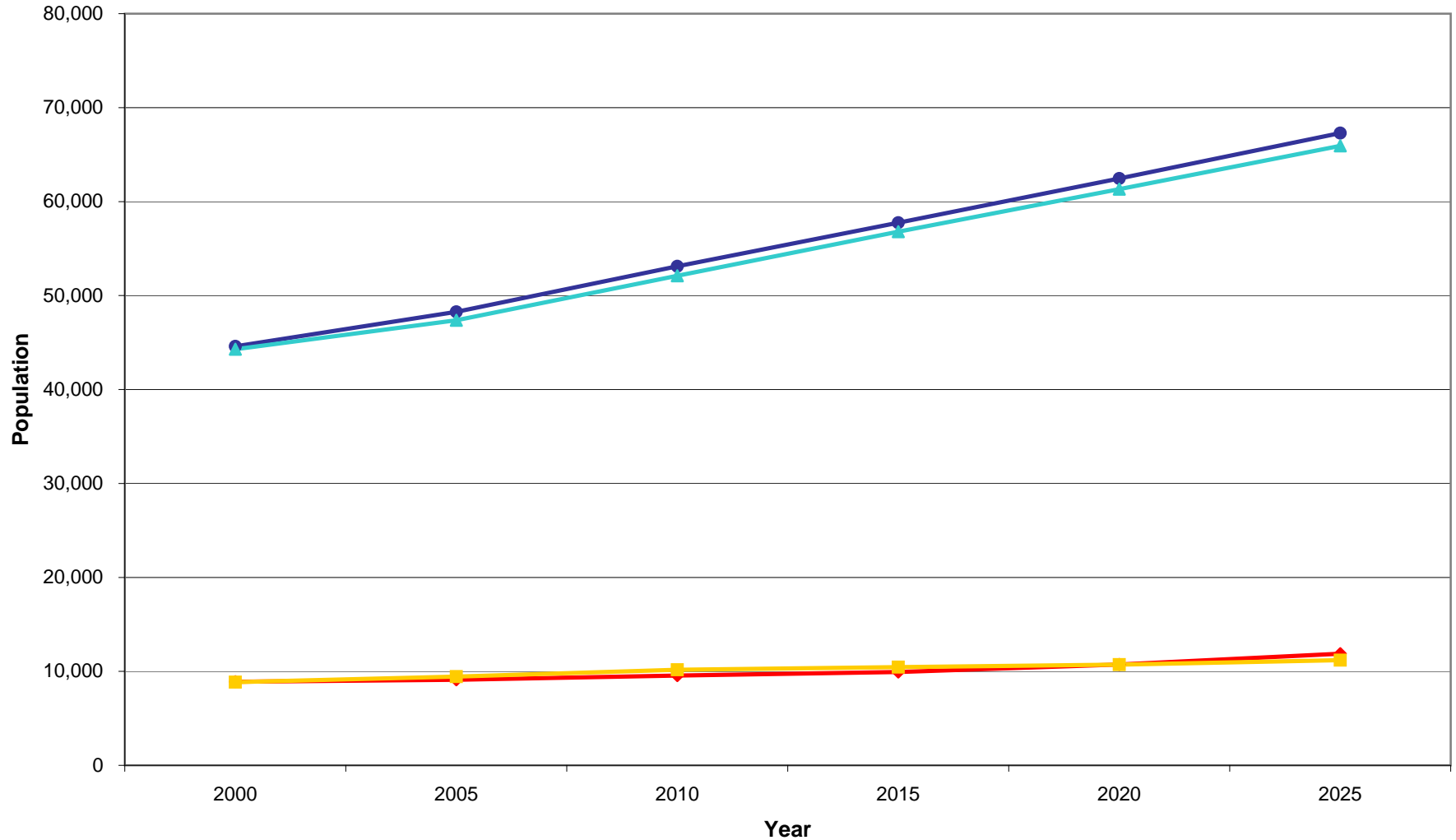
Age Group	2000	2005	2010	2015	2020	2025	Avg. Annual Change (%) 2005-25
Total, all ages	44,294	47,374	52,111	56,796	61,318	65,928	2.0
Under 5 years	2,722	2,665	2,737	2,863	3,025	3,245	1.1
5-9 years	2,871	2,949	2,925	3,002	3,133	3,300	0.6
10-14 years	2,813	3,331	3,486	3,496	3,592	3,761	0.6
15-19 years	3,176	3,162	3,761	3,957	3,986	4,128	1.5
20-24 years	3,260	3,025	3,020	3,598	3,782	3,790	1.3
25-29 years	2,993	3,136	3,041	3,037	3,612	3,795	1.0
30-34 years	3,166	3,205	3,460	3,356	3,348	3,912	1.1
35-39 years	3,481	3,343	3,515	3,763	3,657	3,644	0.5
40-44 years	3,251	3,647	3,678	3,864	4,119	4,032	0.5
45-49 years	2,848	3,422	3,997	4,066	4,273	4,571	1.7
50-54 years	3,027	3,018	3,772	4,401	4,513	4,807	3.0
55-59 years	2,687	3,129	3,328	4,138	4,806	5,034	3.0
60-64 years	2,296	2,655	3,207	3,414	4,199	4,857	4.1
65-69 years	1,866	2,216	2,638	3,150	3,341	4,067	4.2
70-74 years	1,437	1,653	2,074	2,446	2,902	3,069	4.3
75 years and over	2,400	2,818	3,471	4,243	5,029	5,917	5.5
Approx. school age (5-19 years)	8,860	9,442	10,172	10,455	10,711	11,189	0.9
Share (%) of total	20.0	19.9	19.5	18.4	17.5	17.0	
Working age (20-64 years)	27,009	28,580	31,019	33,638	36,310	38,441	1.7
Share (%) of total	61.0	60.3	59.5	59.2	59.2	58.3	
Seniors (65 years and over)	5,703	6,687	8,183	9,840	11,273	13,053	4.8
Share (%) of total	12.9	14.1	15.7	17.3	18.4	19.8	

Source Data:

Tennessee Advisory Commission on Intergovernmental Relations (TACIR) and the University of Tennessee

Center for Business and Economic Research, Population Projections for the State of Tennessee, 2005-2025. December, 2003.

COMPARISON OF GROWTH MODELS: WOODS & POOLE vs TACIR/CBER



**AVERAGE HOUSEHOLD SIZE, 1980-2030
(PERSONS PER HOUSEHOLD)
JEFFERSON COUNTY AND TENNESSEE AVERAGES**

Year	Jefferson County	Tennessee
1980	2.81	2.76
1985	2.66	2.65
1990	2.55	2.56
1995	2.52	2.54
2000	2.48	2.48
2005	2.45	2.43
2010	2.42	2.39
2015	2.40	2.36
2020	2.40	2.34
2025	2.41	2.34
2030	2.43	2.34

Source Data:

Woods and Poole Economics, 2007.

U.S. Census Bureau.

JEFFERSON COUNTY PUBLIC AND PRIVATE SCHOOL ENROLLMENTS, 2000-2007

Grade Level/School Type	2000	Share (%) of Category Total	2005-07	Share (%) of Category Total
Preschool	481		556	
Public school	318	66.1	270	48.6
Private school	163	33.9	286	51.4
Kindergarten	563		755	
Public school	528	93.8	755	100.0
Private school	35	6.2	0	0.0
Elementary (grades 1-8)	4,817		4,416	
Public school	4,618	95.9	4,308	97.6
Private school	199	4.1	108	2.4
High (grades 9-12)	2,247		2,412	
Public school	2,111	93.9	2,302	95.4
Private school	136	6.1	110	4.6
Total (K-12)	7,627		7,583	
Public school	7,257	95.1	7,365	97.1
Private school	370	4.9	218	2.9

Note: Census Bureau figures are statistical estimates derived from sampled population data. As a result, slight differences will be noted between Census Bureau enrollment estimates and actual counts reported by Jefferson County Schools.

Source Data:

U.S. Census Bureau, 2000 Census of Population and Housing.

U.S. Census Bureau, 2005-2007 American Community Survey, 3-Year Estimates.

JEFFERSON COUNTY DEMOGRAPHIC CHARACTERISTICS, 2005-2007

CHARACTERISTIC	ESTIMATE	SHARE OF TOTAL (%)
Total Population	49,069	
Male	24,182	49.3
Female	24,887	50.7
Age		
Under 5 years	2,780	5.7
5 to 9 years	3,116	6.4
10 to 14 years	2,900	5.9
15 to 19 years	3,423	7.0
20 to 24 years	3,645	7.4
25 to 34 years	6,682	13.6
35 to 44 years	6,934	14.1
45 to 54 years	6,793	13.8
55 to 59 years	2,940	6.0
60 to 64 years	2,854	5.8
65 to 74 years	4,109	8.4
75 to 84 years	2,139	4.4
85 years and over	754	1.5
Median age (years)	37.8	
18 years and over	38,266	78.0
21 years and over	35,986	73.3
65 years and over	7,002	14.3
Race		
White	46,962	95.7
Black/African American	1,093	2.2
American Indian/Alaska Native	87	0.2
Asian	225	0.5
Native Hawaiian/Pacific Islander	65	0.1
Some other race	111	0.2
Two or more races	526	1.1
Hispanic or Latino (of any race)	1,066	2.2

Source Data: U.S. Census Bureau, *American Community Survey, Demographic and Housing Estimates, 2005-2007*.

JEFFERSON COUNTY SOCIAL CHARACTERISTICS, 2005-2007

CHARACTERISTIC	ESTIMATE	SHARE OF TOTAL (%)
Households by Type		
Total households	19,077	
Family households (families)	13,579	71.2
With own children under 18 years	6,248	32.8
Married-couple family	10,956	57.4
With own children under 18 years	4,782	25.1
Male householder, no wife present, family	799	4.2
With own children under 18 years	389	2.0
Female householder, no husband present, family	1,824	9.6
With own children under 18 years	1,077	5.6
Nonfamily households	5,498	28.8
Average household size	2.51	
Average family size	2.96	
Educational Attainment		
Population 25 years and over	33,205	
Less than 9th grade	3,223	9.7
9th to 12th grade, no diploma	5,120	15.4
High school graduate (includes equivalency)	12,007	36.2
Some college, no degree	5,639	17.0
Associate's degree	2,656	8.0
Bachelor's degree	2,732	8.2
Graduate or professional degree	1,828	5.5
Percent high school graduate or higher	74.9	
Percent bachelor's degree or higher	13.7	
Residence 1 Year Ago		
Population 1 year and over	48,462	
Same house	39,966	82.5
Different house in the U.S.	8,344	17.2
Same county	3,375	7.0
Different county	4,969	10.3
Same state	3,195	6.6
Different state	1,774	3.7
Abroad	152	0.3
Place of Birth		
Total population	49,069	
Native	48,082	98.0
Born in United States	47,741	97.3
State of residence	31,756	64.7
Different state	15,985	32.6
Born in Puerto Rico, U.S. islands, abroad to Am. parents	341	0.7
Foreign born	987	2.0
U.S. Citizenship Status		
Foreign-born population	987	
Naturalized U.S. citizen	303	30.7
Not a U.S. citizen	684	69.3
Year of Entry		
Population born outside the United States	1,328	
Native	341	
Entered 2000 or later	57	16.7
Entered before 2000	284	83.3
Foreign born	987	
Entered 2000 or later	508	51.5
Entered before 2000	479	48.5

JEFFERSON COUNTY INCOME CHARACTERISTICS, 2005-2007

CHARACTERISTIC	ESTIMATE	SHARE OF TOTAL (%)
Income and Benefits		
Total households	19,077	
Less than \$10,000	1,852	9.7
\$10,000 to \$14,999	1,801	9.4
\$15,000 to \$24,999	2,843	14.9
\$25,000 to \$34,999	2,358	12.4
\$35,000 to \$49,999	2,754	14.4
\$50,000 to \$74,999	3,852	20.2
\$75,000 to \$99,999	1,793	9.4
\$100,000 to \$149,999	1,119	5.9
\$150,000 to \$199,999	369	1.9
\$200,000 or more	336	1.8
Median household income (dollars)	38,436	
Median family income (dollars)	48,161	
Per capita income (dollars)	19,783	
Percentage of Families/People with Income Below Poverty Level		
All families	12.7	
With related children under 18 years	20.5	
Married couple families	8.7	
With related children under 18 years	13.8	
Families with female householder, no husband present	39.2	
With related children under 18 years	53.6	
All people	17.3	
18 years and over	15.0	
18 to 64 years	16.1	
65 years and over	9.4	

Source Data: U.S. Census Bureau, *American Community Survey, Selected Economic Characteristics, 2005-2007*.

JEFFERSON COUNTY EMPLOYMENT CHARACTERISTICS, 2005-2007

CHARACTERISTIC	ESTIMATE	SHARE OF TOTAL (%)
Employment Status		
Population 16 years and over	39,535	
In labor force	24,849	62.9
Civilian labor force	24,849	62.9
Employed	23,187	58.6
Unemployed	1,662	4.2
Armed Forces	0	0.0
Not in labor force	14,686	37.1
Civilian Labor Force		
	24,849	
Unemployed	1,662	6.7
Workers by Industry		
Civilian employed population 16 years and over	23,187	
Agriculture, forestry, fishing and hunting, and mining	526	2.3
Construction	2,063	8.9
Manufacturing	3,820	16.5
Wholesale trade	845	3.6
Retail trade	3,694	15.9
Transportation and warehousing, and utilities	1,080	4.7
Information	324	1.4
Finance and insurance, real estate, rental, leasing	1,038	4.5
Professional, scientific, and mgmt., admin., waste mgmt.	1,313	5.7
Educational services, health care, social assistance	4,108	17.7
Arts, entertainment, recreation, accommodation, food services	2,424	10.5
Other services, except public administration	977	4.2
Public administration	975	4.2

Source Data: U.S. Census Bureau, *American Community Survey, Selected Economic Characteristics, 2005-2007*.

TOP 25 EMPLOYERS IN JEFFERSON COUNTY

Company	Product/Industry	Employment
Old Dominion Freight Line	Specialized Freight Trucking	850
Carson-Newman College	Colleges, Universities, and Professional Schools	500
Wal-Mart Supercenter	Department Stores	400
Bush Brothers and Co	Fruit and Vegetable Canning	360
BAE Systems	Suit, Coat, and Overcoat Manufacturing	350
Nashua Corp	Coated and Laminated Paper Manufacturing	302
East Tennessee Zinc Co	Mineral Mining	300
St Mary's Jefferson Memorial Hospital	Hospitals/Offices of Physicians	260
Dillard Smith Construction Co	Power/Communication Line Construction	235
Jefferson City Health and Rehabilitation	Nursing Care Facilities	175
Clayton Homes	Mobile Home Manufacturing	159
Ball Metal Food Container Corp	Metal Can Manufacturing	153
Jefferson County High School	Elementary and Secondary Schools	150
Matsuo Industries USA Inc	Motor Vehicle Parts Manufacturing	148
Asarco Young Mine Shop	Mineral Mining	144
Algoma Hardwood	Wood Window and Door Manufacturing	130
Jefferson County Nursing Home	Nursing Care Facilities	130
Life Care Center of Jefferson County	Nursing Care Facilities	121
Liford Manufacturing Corp	Upholstered Household Furniture Manufacturing	120
Food City	Supermarkets and Other Grocery Stores	110
Schrader Trucking Co	Specialized Freight Trucking	105
Dandridge Elementary School	Elementary and Secondary Schools	102
Mountain View Youth Development	Correctional Institutions	100
Jefferson Elementary School	Elementary and Secondary Schools	99
Rathbone Energy Inc	Electrical Apparatus and Equipment Wholesalers	99

Source Data:

Jefferson County Chamber of Commerce, 2009.

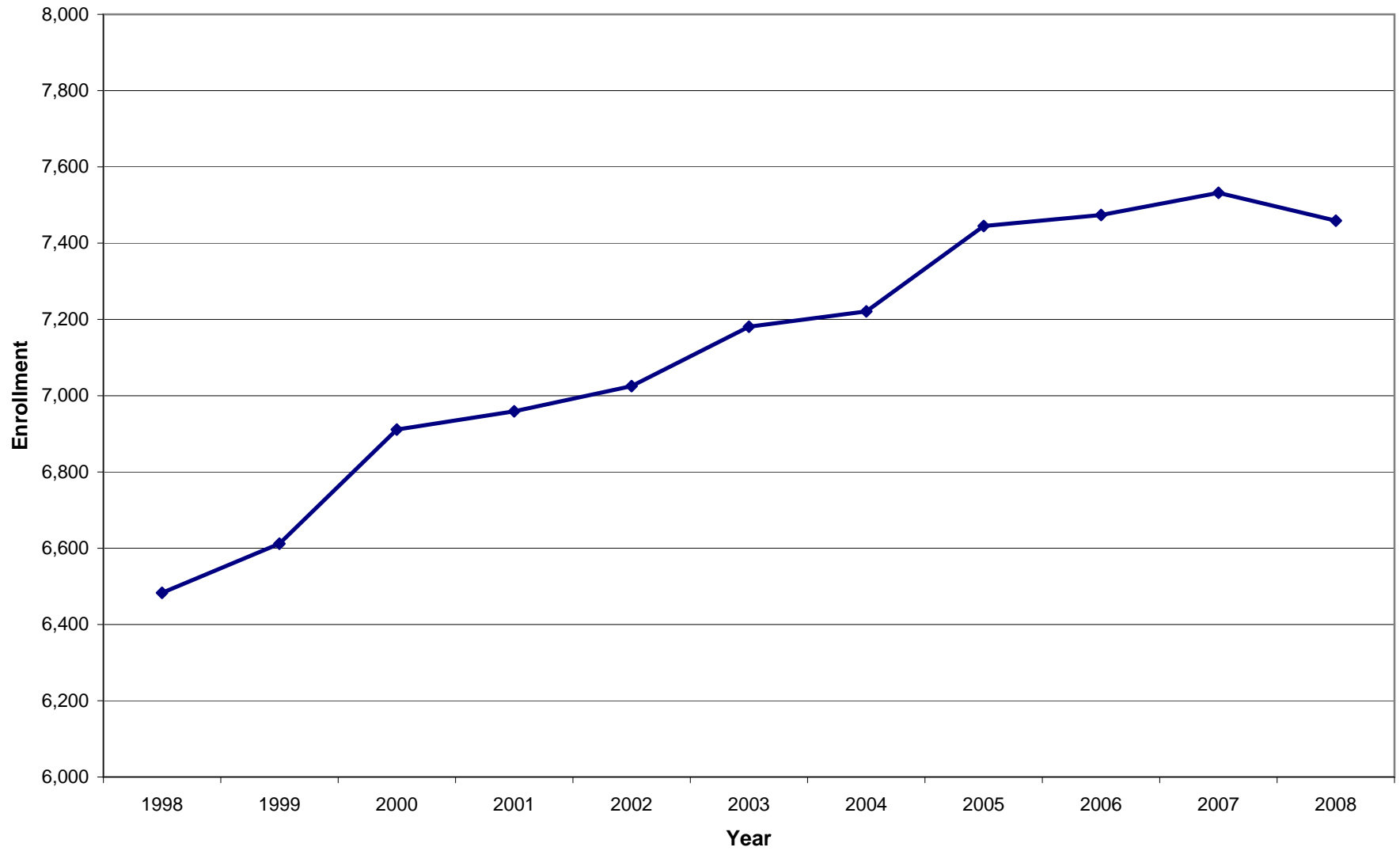
InfoUSA, 2007.

JEFFERSON COUNTY SCHOOLS STUDENT ENROLLMENT CHANGE, 1998/99-2008/09

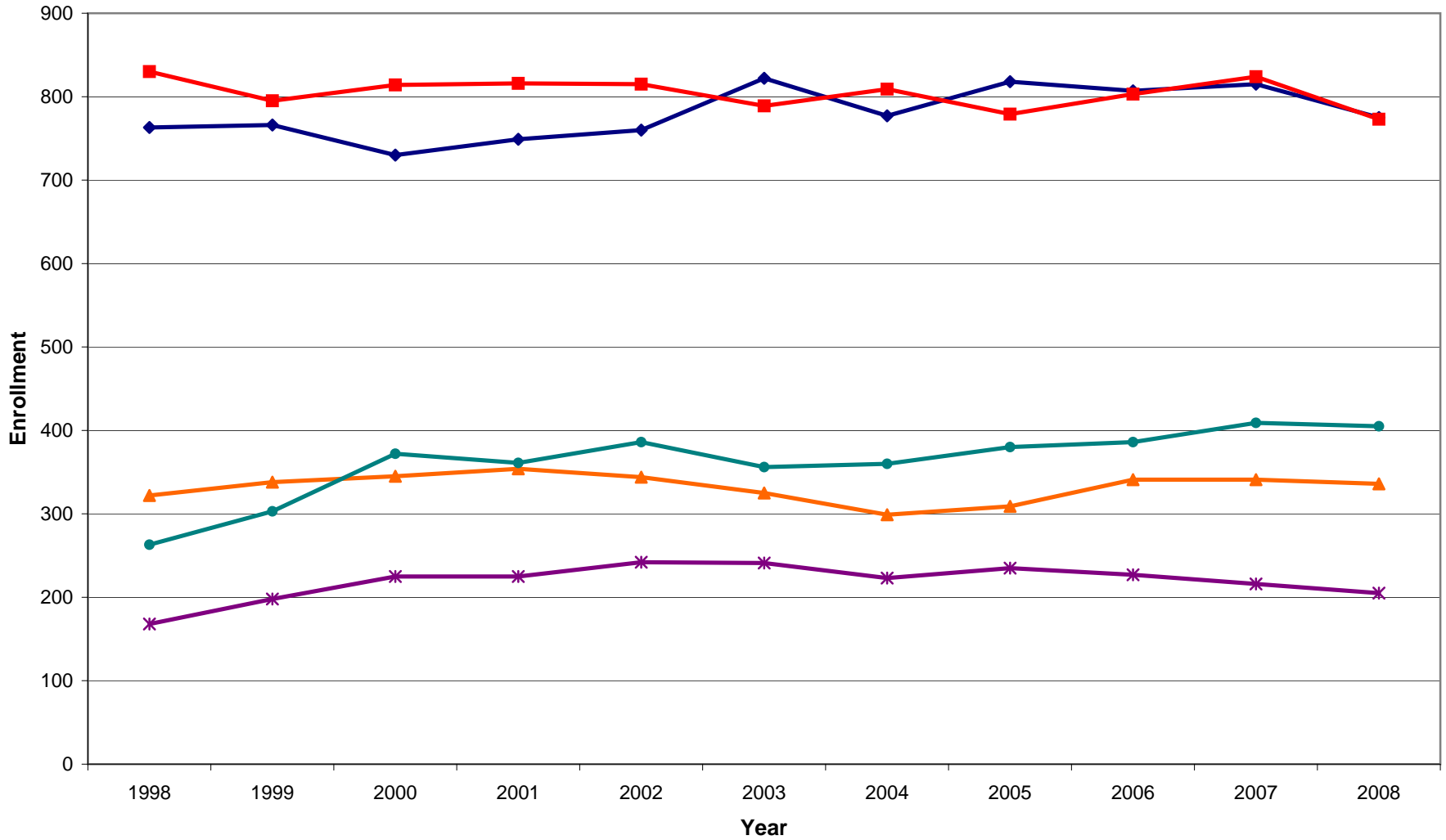
School	Change 1998-2008	Change (%) 1998-2008	Change 1998-2003	Change (%) 1998-2003	Change 2003-2008	Change (%) 2003-2008
Dandridge Elementary	12	1.6	59	7.7	-47	-5.7
Jefferson Elementary	-57	-6.9	-41	-4.9	-16	-2.0
New Market Elementary	14	4.3	3	0.9	11	3.4
Piedmont Elementary	142	54.0	93	35.4	49	13.8
Talbott Elementary	37	22.0	73	43.5	-36	-14.9
Rush Strong School	66	11.8	40	7.1	26	4.3
White Pine School	109	15.7	37	5.3	72	9.8
Jefferson Middle	69	11.9	117	20.1	-48	-6.9
Maury Middle	132	28.1	120	25.6	12	2.0
Jefferson County High	452	24.7	197	10.8	255	12.6
Total	976	15.1	698	10.8	278	3.9

Source Data: Jefferson County Schools, Second Grading Period Enrollment, 1998/99-2008/09.

SYSTEMWIDE ENROLLMENT, 1998-2008

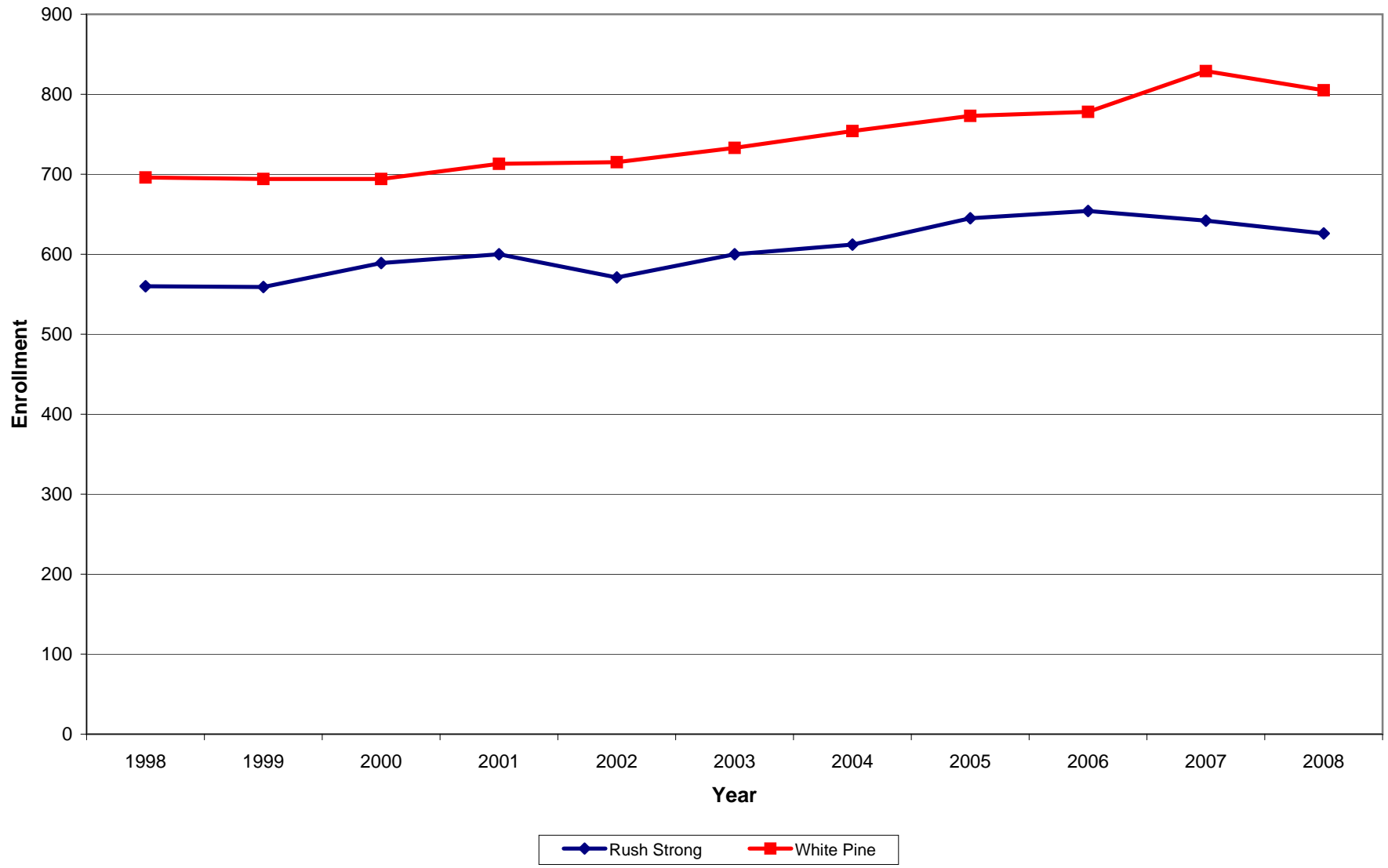


ELEMENTARY SCHOOL ENROLLMENT, 1998-2008

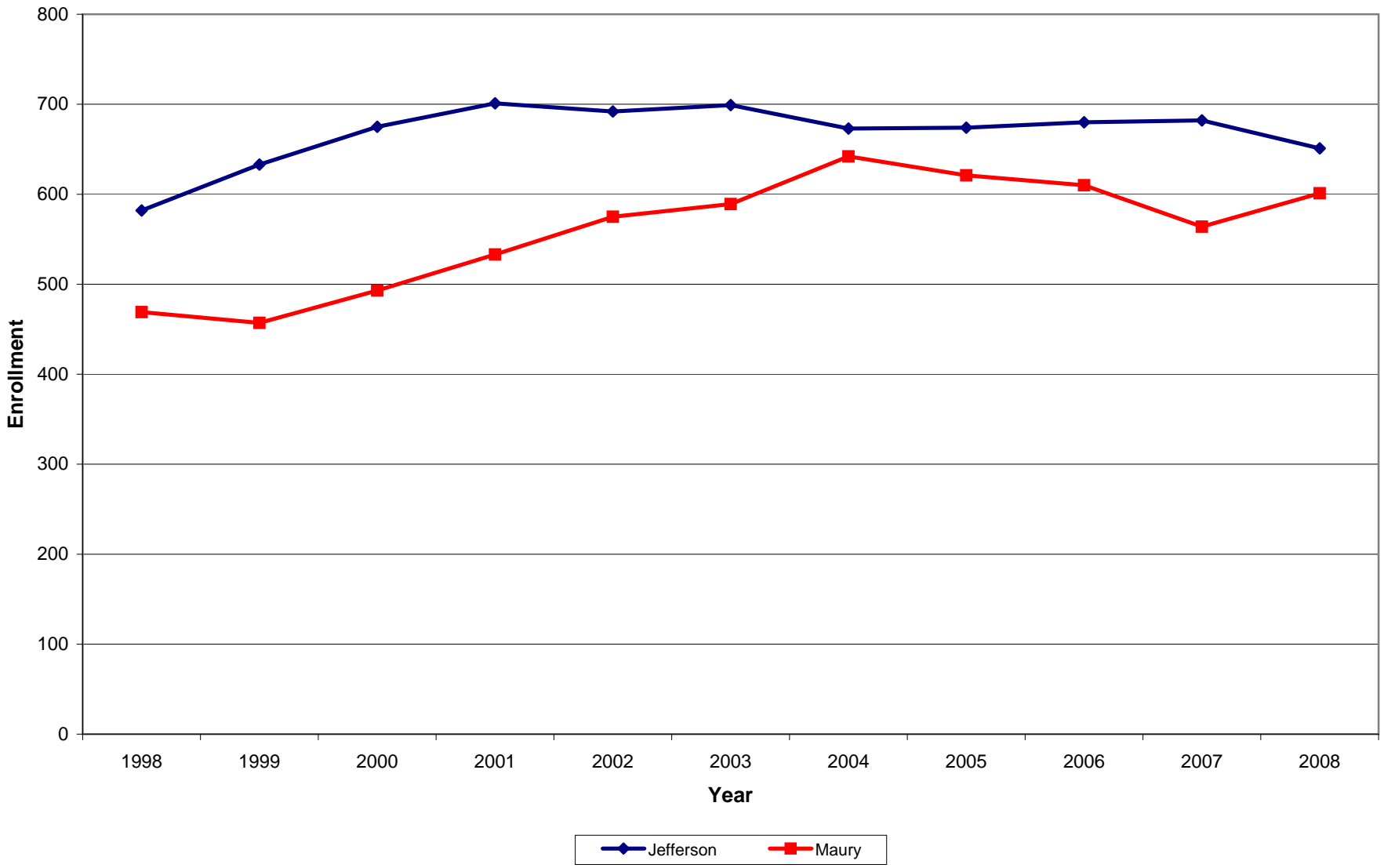


◆ Dandridge ■ Jefferson ▲ New Market ● Piedmont * Talbott

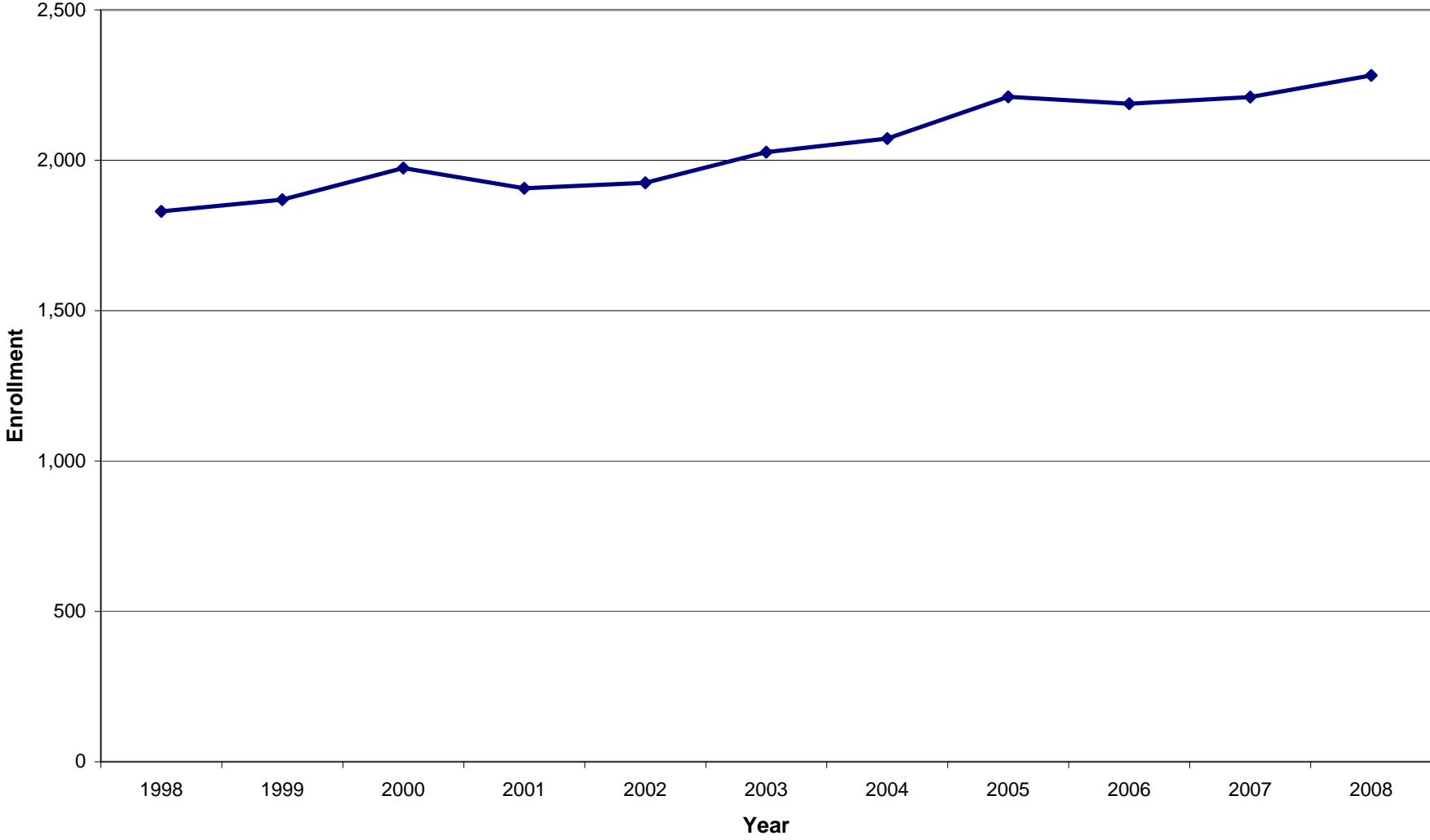
K-8 SCHOOLS ENROLLMENT, 1998-2008



MIDDLE SCHOOL ENROLLMENT, 1998-2008

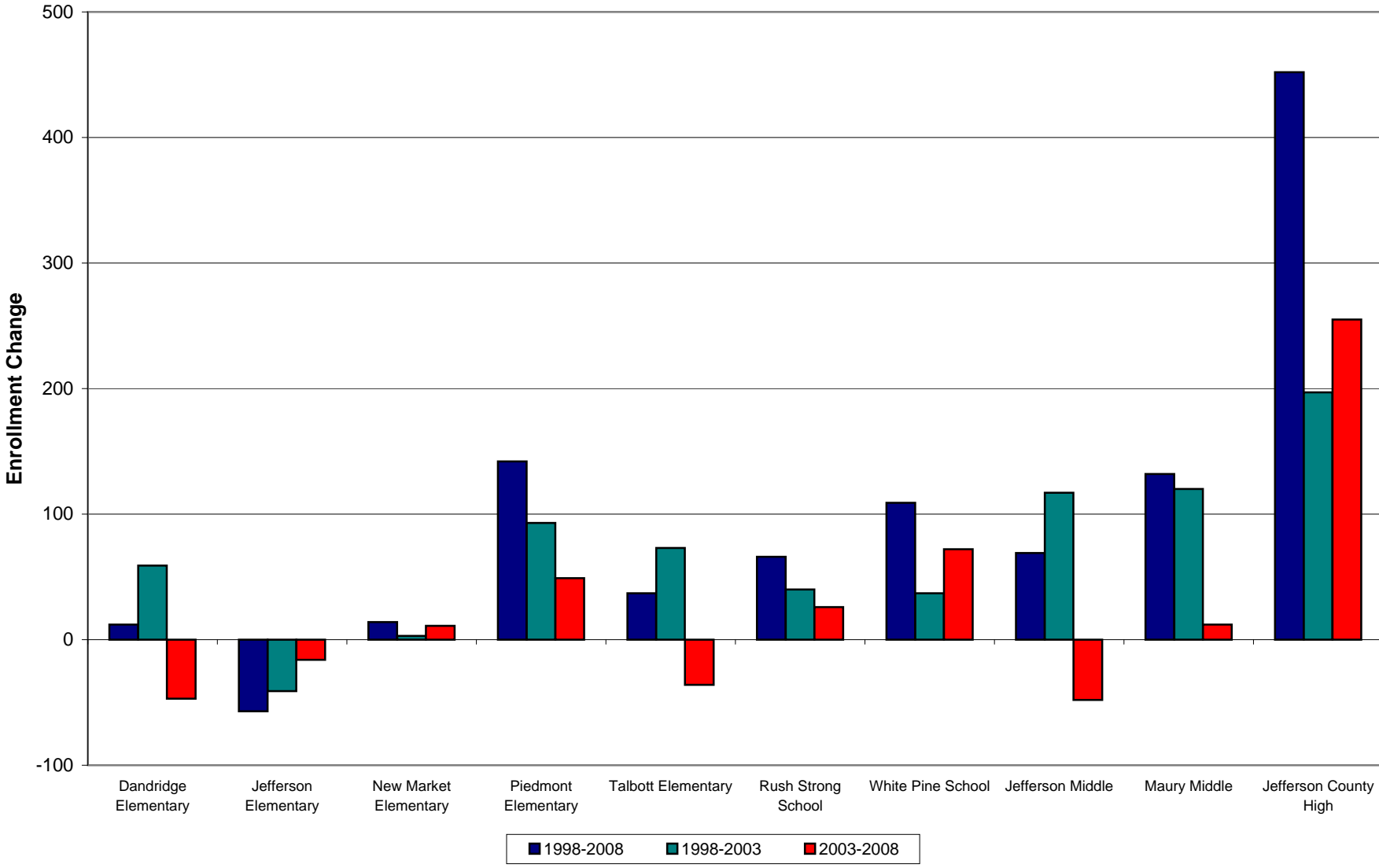


HIGH SCHOOL ENROLLMENT, 1998-2008



◆ Jefferson County

ENROLLMENT CHANGE BY SCHOOL, 1998-2008

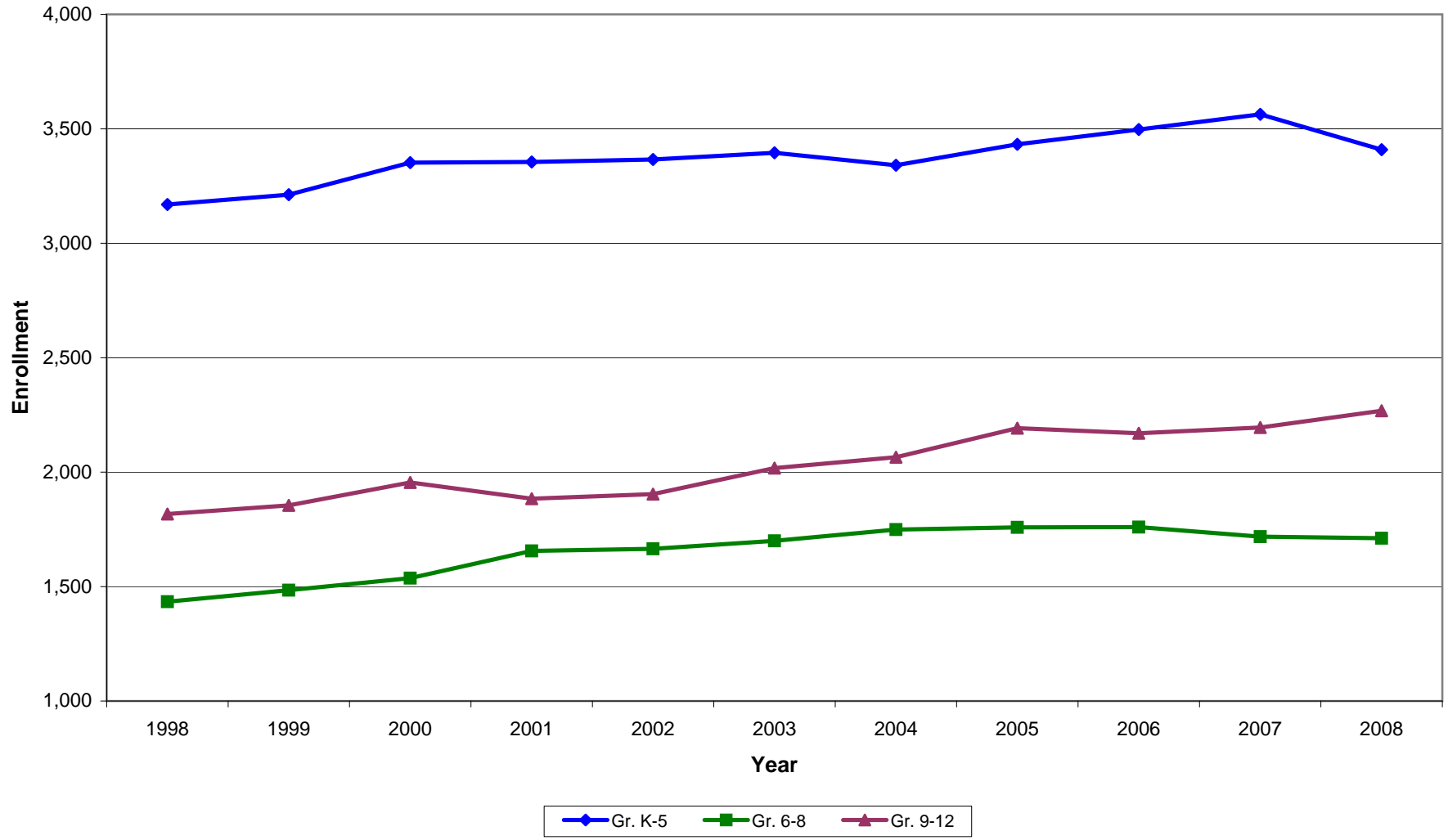


JEFFERSON COUNTY SCHOOLS STUDENT ENROLLMENT CHANGE BY GRADE LEVEL, 1998/99-2008/09

Grade	Change 1998-2008	Change (%) 1998-2008	Change 1998-2003	Change (%) 1998-2003	Change 2003-2008	Change (%) 2003-2008
K-5	240	7.6	226	7.1	14	0.4
6-8	277	19.3	266	18.5	11	0.6
9-12	451	24.8	201	11.1	250	12.4
SE 7-9	8	12.7	5	7.9	3	4.4
Total	976	15.1	698	10.8	278	3.9

Source Data: Jefferson County Schools, Second Grading Period Enrollment, 1998/99-2008/09.

ENROLLMENT BY GRADE LEVEL, 1998-2008



ENROLLMENT CHANGE BY GRADE LEVEL, 1998-2008

